

mindwalker Installation Guide

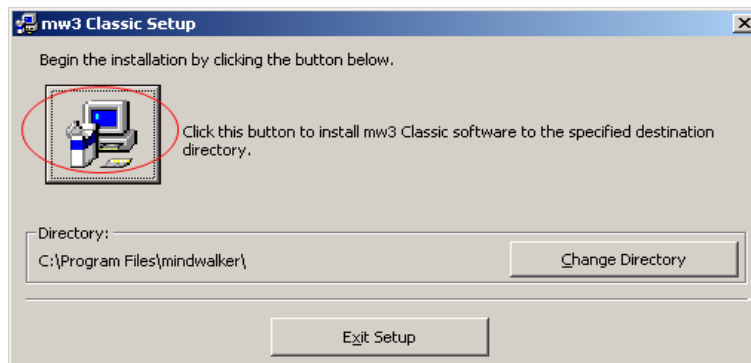
Issue 2.20
16/08/2015

Note: Do not connect the mindwalker hardware to the USB yet!

When upgrading to a later version it is not necessary to remove the old version first.

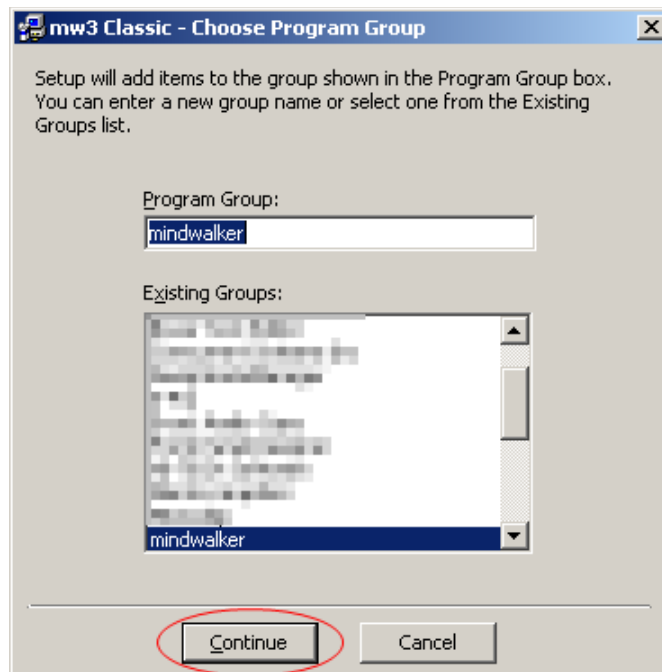
Clicking the software download link will (depending on your browser settings) either start the installation or save the installation file on your computer (in which case locate and double click the file). This will bring up the screen shown below.

1.



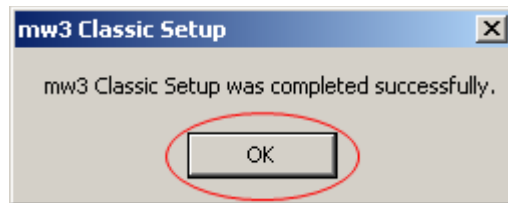
As indicated, click on the button showing the computer icon.

2.



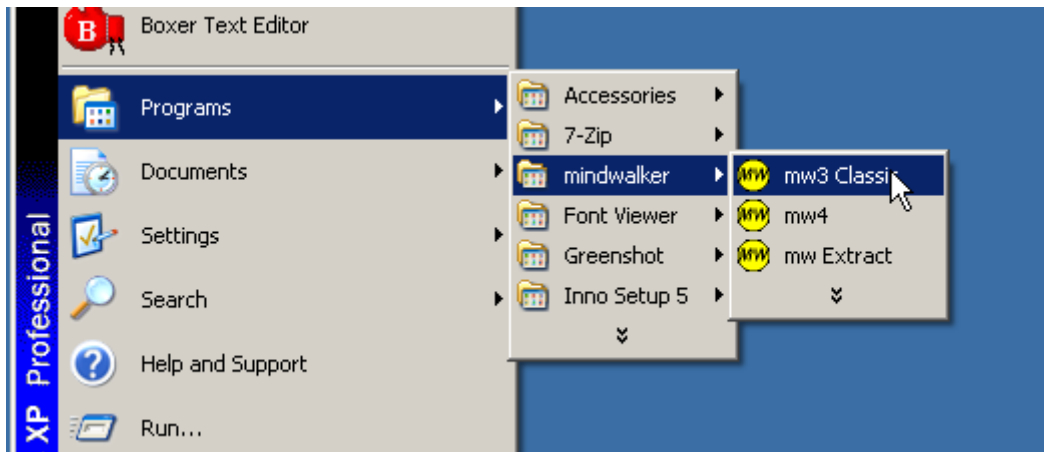
Click on Continue

3.



Click OK to complete the installation.

Run the program from the START button and if required add a desktop shortcut in the standard way.



The screenshots show installation of *mw3 Classic Software*, the same procedure is used for all mindwalker software.

If you have purchased the mindwalker hardware then proceed to the USB driver installation instructions on the next page.

Note: These USB driver instructions relate only to meters manufactured from 2014 onwards. Contact the manufacturer for instructions on how to install USB drivers for earlier meters.

Hardware USB Driver Installation

For Windows 7 onwards – **Before plugging in the mindwalker hardware**

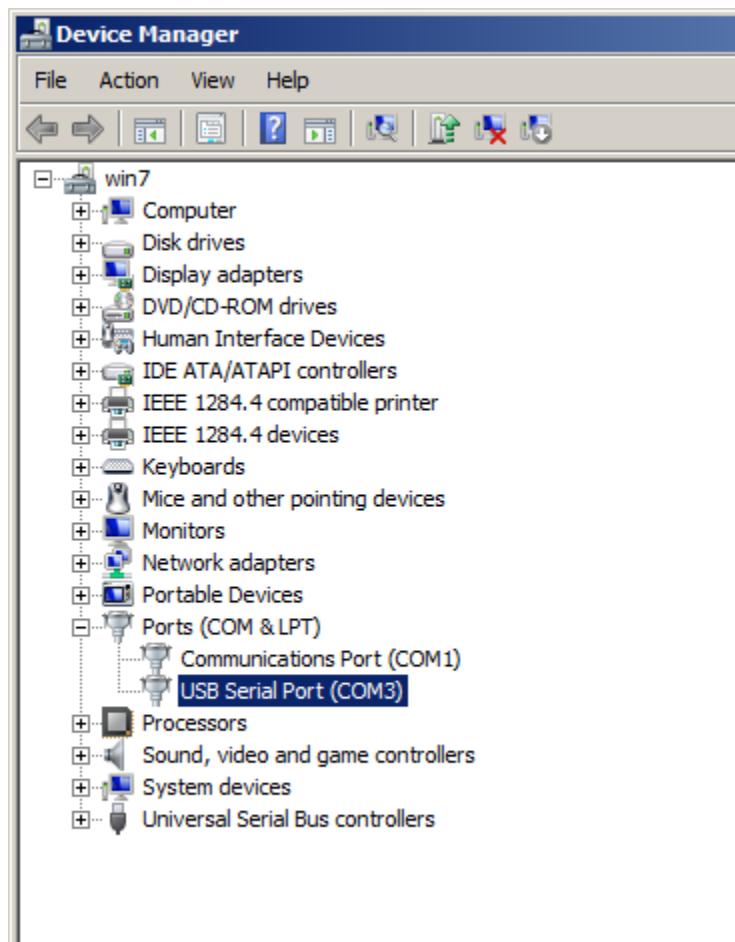
Download and run (right click and select Run as administrator)

http://mindwalker.weebly.com/uploads/1/3/6/3/1363457/cdm_v2.12.00_whql_certified.exe

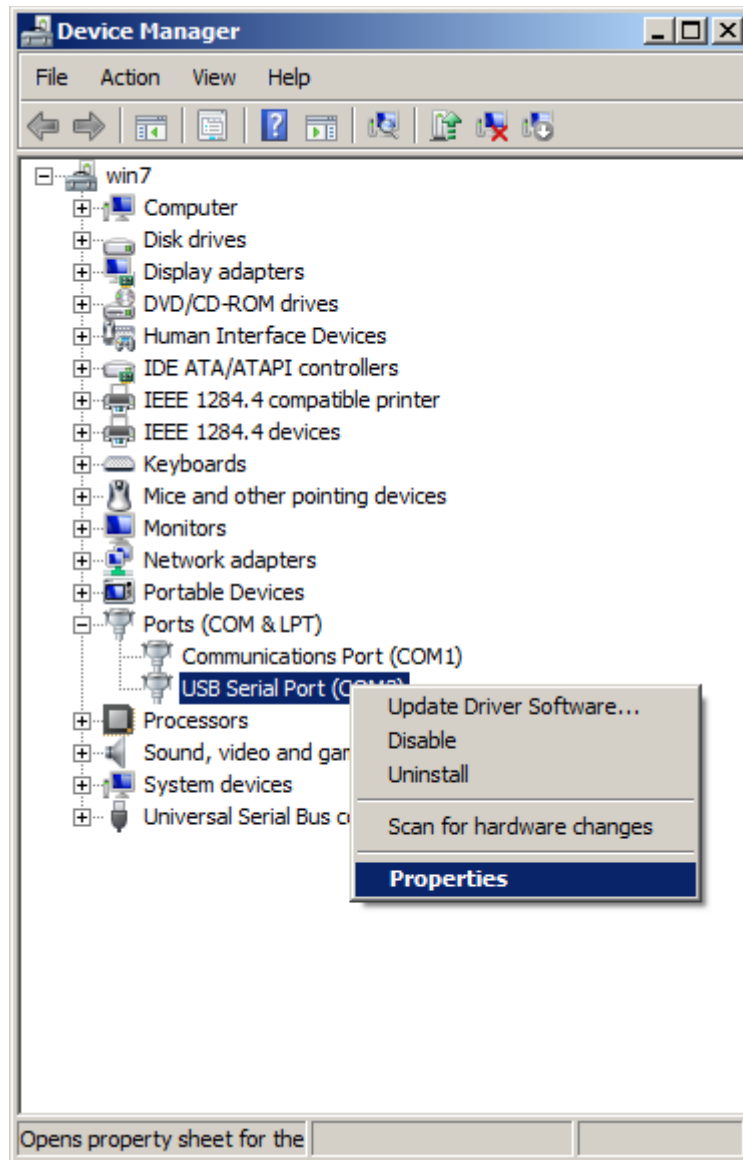
Go through the various dialog boxes until they report that the drivers were successfully installed. If there were problems or you are using XP, then see the section on Manual USB Driver Installation on page 7.

Plug the mindwalker hardware into a USB port.

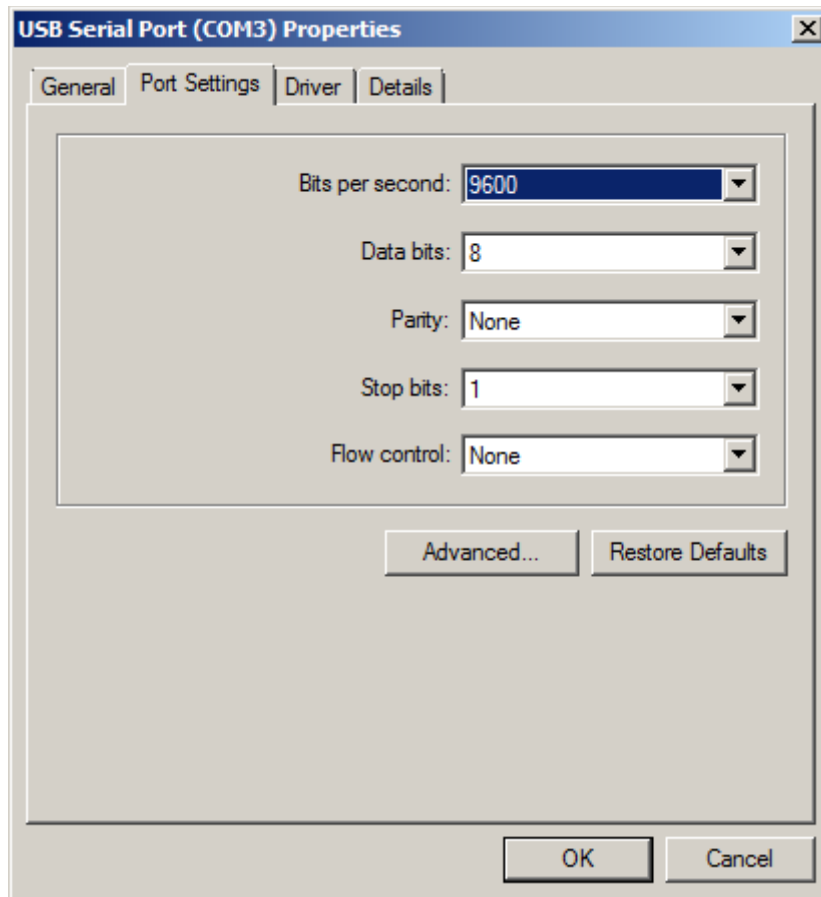
When the USB Driver has been successfully installed, some settings will need changing. This is not absolutely necessary but does improve performance.



Open the Device Manager from Control Panel. Look in **Ports(COM & LPT)** for the **USB Serial Port (COM3)**. Note that the COM port number (3 in this case) will probably be different on your computer. Just make the changes as described below for whichever COM port has been assigned.

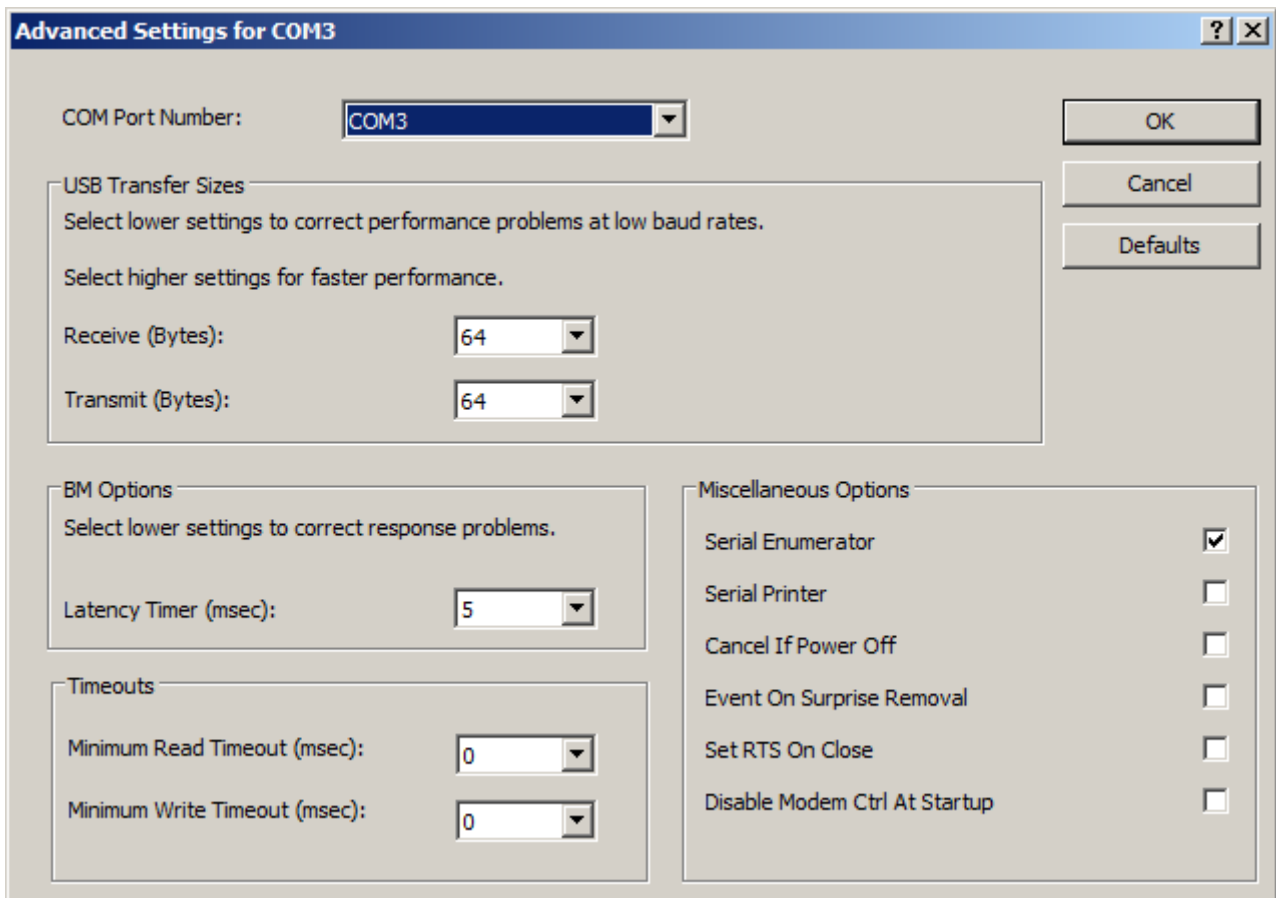


Right click USB Serial Port (COM3) and select Properties.



Select the Port Settings tab and click the Advanced button

Change the settings for Receive (Bytes), Transmit (Bytes) and Latency Timer (msec) to those shown below.



Then click OK to close all windows.

Manual USB Driver Installation

This is the procedure for installing USB drivers on Windows XP, if you need to install on Windows Vista or 7 the procedure is similar but the screenshots will look different.

Before starting the procedure, download the USB driver files from:

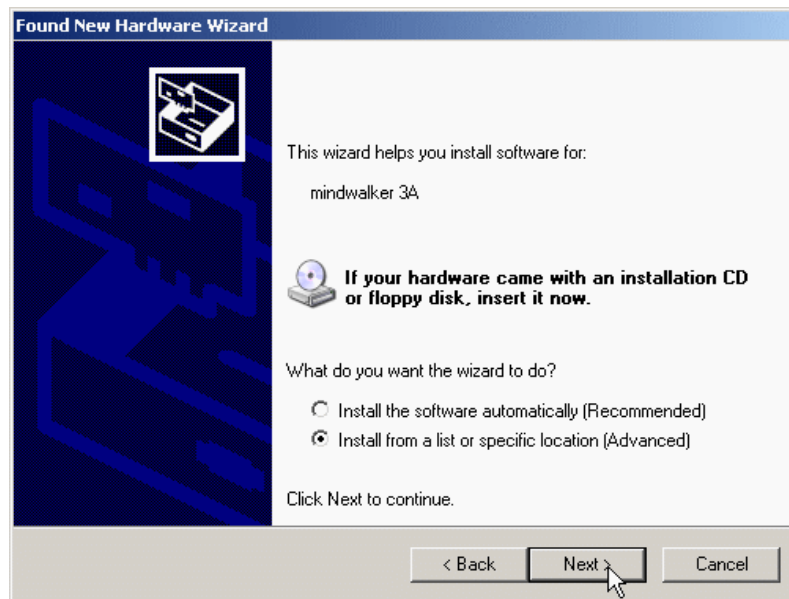
http://mindwalker.weebly.com/uploads/1/3/6/3/1363457/mw_usb_standard_driver.exe

and run (double click) the download to extract the files, making sure to remember where they are located.

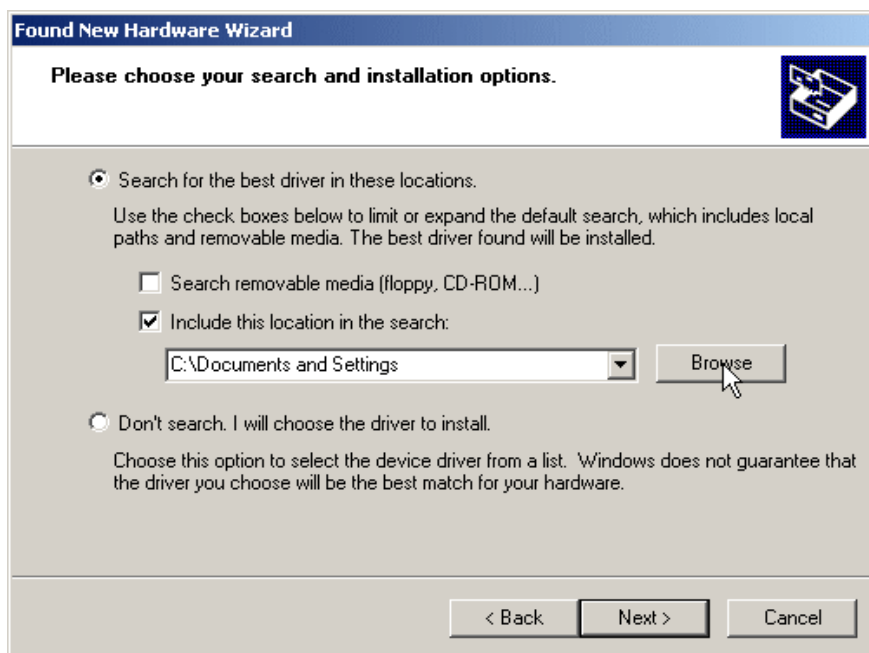
1. Plug the mindwalker hardware into a USB port on your computer. This will launch the Windows Found New Hardware Wizard. If the Found New Hardware Wizard does not launch then see note at end of these instructions.



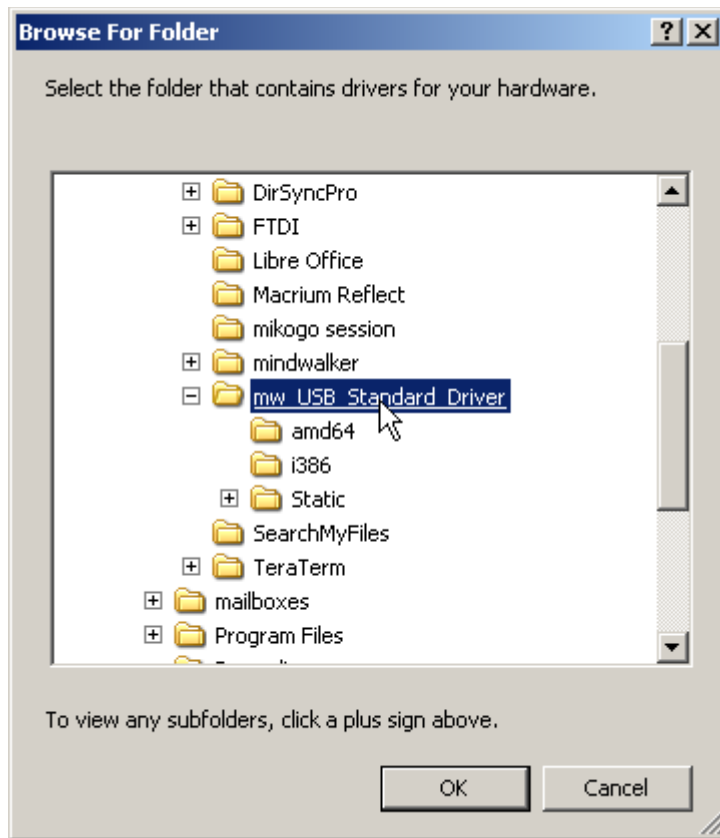
2. Select the **'No, not this time'** option and click **'Next'**



3. Select **'Install from a list or specific location (Advanced)'** and click **'Next'**



4. Select **'Search for the best driver in these locations'** and check **'Include this location in the search'**, then click **'Browse'**



5. Browse to the location of the mw_USB_Standard_Driver folder and select it. Then click 'OK'
6. Click 'Next' to continue.



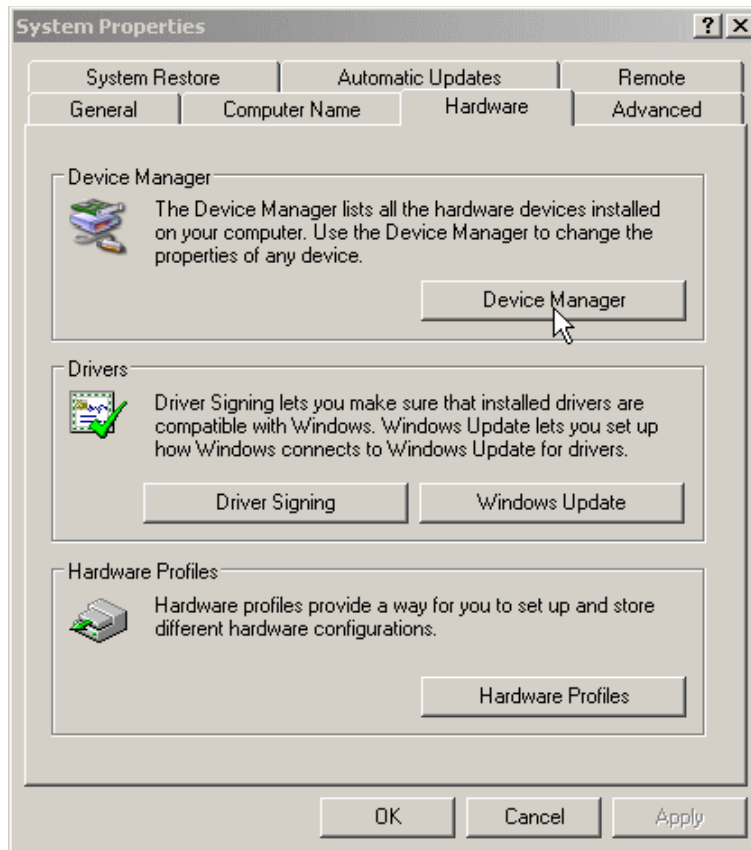
7. When a warning box appears saying that the software has not passed Windows Logo testing, click 'Continue Anyway'.



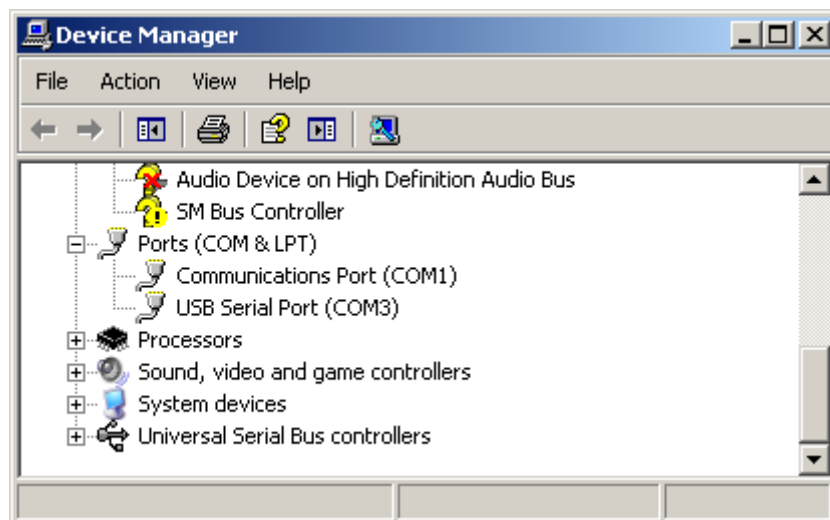
8. Windows should then display a message indicating that the installation was successful. Click **'Finish'**.

9. The computer will now indicate that it has found new hardware again and present the Found New Hardware Wizard once more. Repeat steps 2 to 8.

10. Correct installation of the USB driver can be verified by locating it in the Device Manager. To open the device manager in XP click '**System**' in the Control Panel and then select the Hardware tab of the System Properties



Click on '**Device Manager**' and you will be presented with a list of hardware devices. Expand the 'Ports (COM & LPT)' entry by clicking on the + sign to its left.



The mindwalker device should be listed here as 'USB Serial Port (COM3)' indicating that it has been assigned COM Port number 3. Your computer may have assigned it a different number.

There have been a few occasions, particularly on laptops, when the **mindwalker** device has been assigned a COM port already used by another device, for example an in-built modem. The Device Manager shows that the **mindwalker** is present (it is listed under Ports) but the application software does not detect it. The COM port number should be increased by going to the Device Manager, right click on **mindwalker** and select Properties, then Port Settings, then Advanced. A drop down list of COM Port numbers is then available, and a different one can be selected.

Note - If the Found New Hardware Wizard does not launch:

This means that there is already a driver installed or Windows has assigned the wrong driver. In this case a *Driver Update* must be performed. With reference to step 10 above find the entry in the **Device Manager** list for the USB Serial Port. Right click on the entry and select '**Update Driver**'. The Wizard will launch and you can proceed from step 1 above.