

mindwalker **Software Installation Guide**

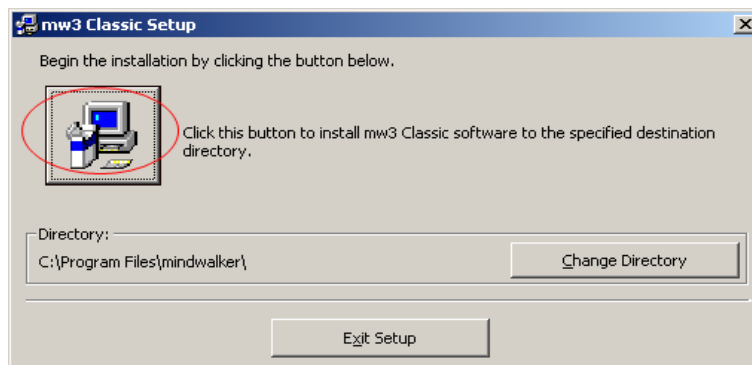
Issue 4.0
17/11/20

When upgrading to a later version it is not necessary to remove the old version first, nor is it necessary to install the USB driver if you have successfully done so previously.

mindwalker software applications are downloadable as a .exe file which will self extract when opened and start the installation procedure. It may first ask you to confirm where you want the extracted files to be stored.

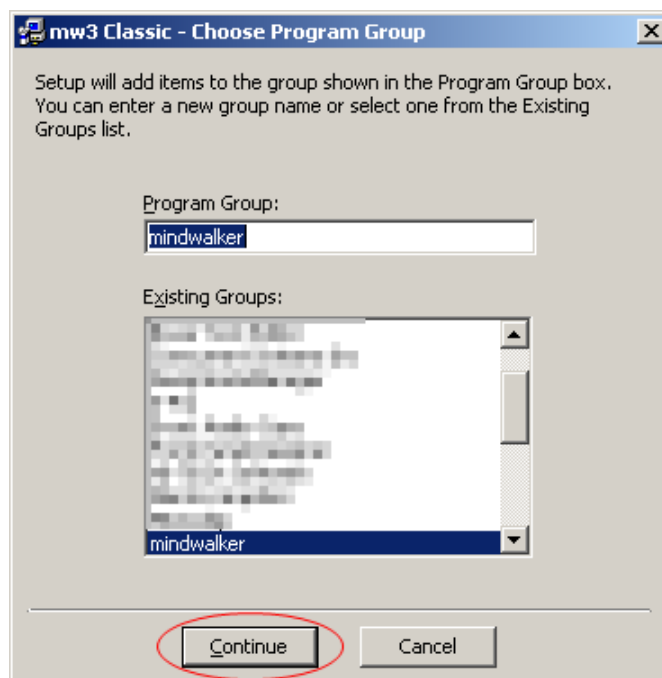
The start of installation will bring up the screen shown below.

1.



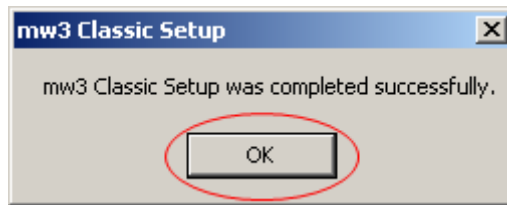
As indicated, click on the button showing the computer icon.

2.



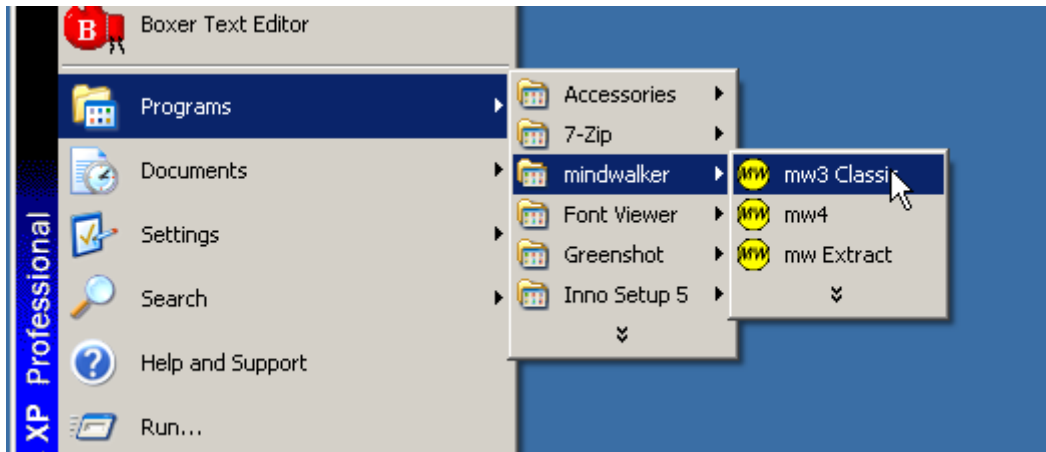
Click on Continue

3.



Click OK to complete the installation.

Run the program from the START button and if required add a desktop shortcut in the standard way.



The screenshots show installation of *mw3 Classic Software*, the same procedure is used for all mindwalker software.

If you have purchased the mindwalker hardware then proceed to the USB driver installation instructions on the next page.

mindwalker USB Driver Installation

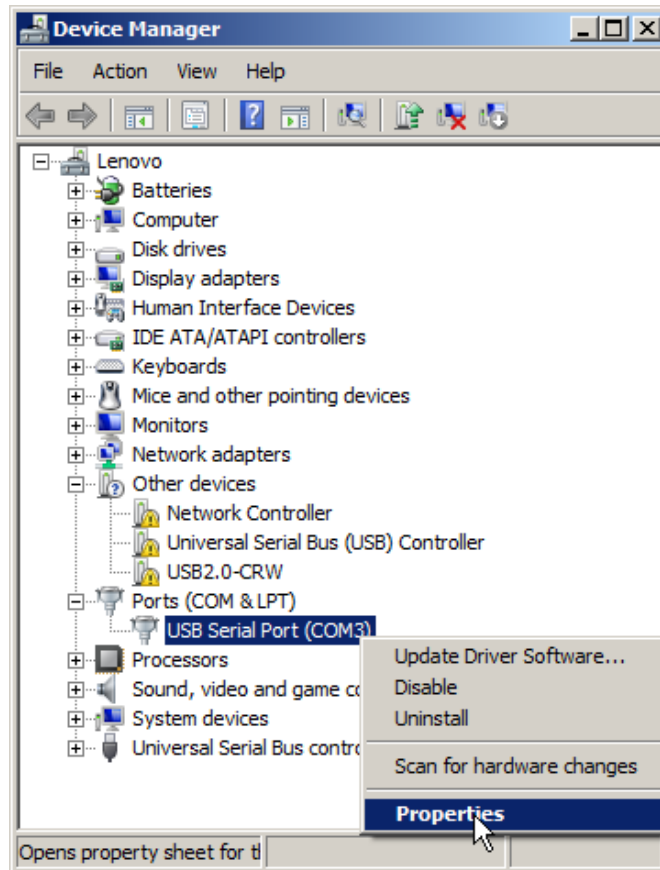
You will need to know how to access the Device Manager on your Windows operating system. The screenshots and instructions in this document relate to Windows 7, and will be different for 8 or 10.

Plug the mindwalker hardware into a USB port and wait for a response from Windows. It is recommended that you unplug any other unnecessary USB devices to avoid possible confusion.

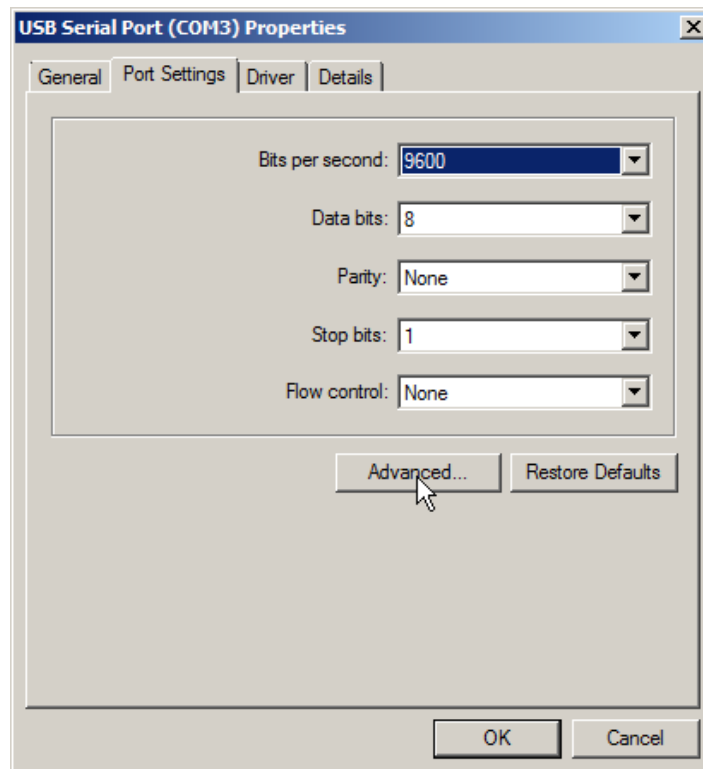
Modern computers (Windows 8 and Windows 10) should automatically install the appropriate drivers and confirm that this succeeded. If that is the case then proceed to the **Settings Modifications** section on the next page. If unsuccessful or you are running Windows 7 then proceed with the manual installation at the end of this document on page 6.

Settings Modifications

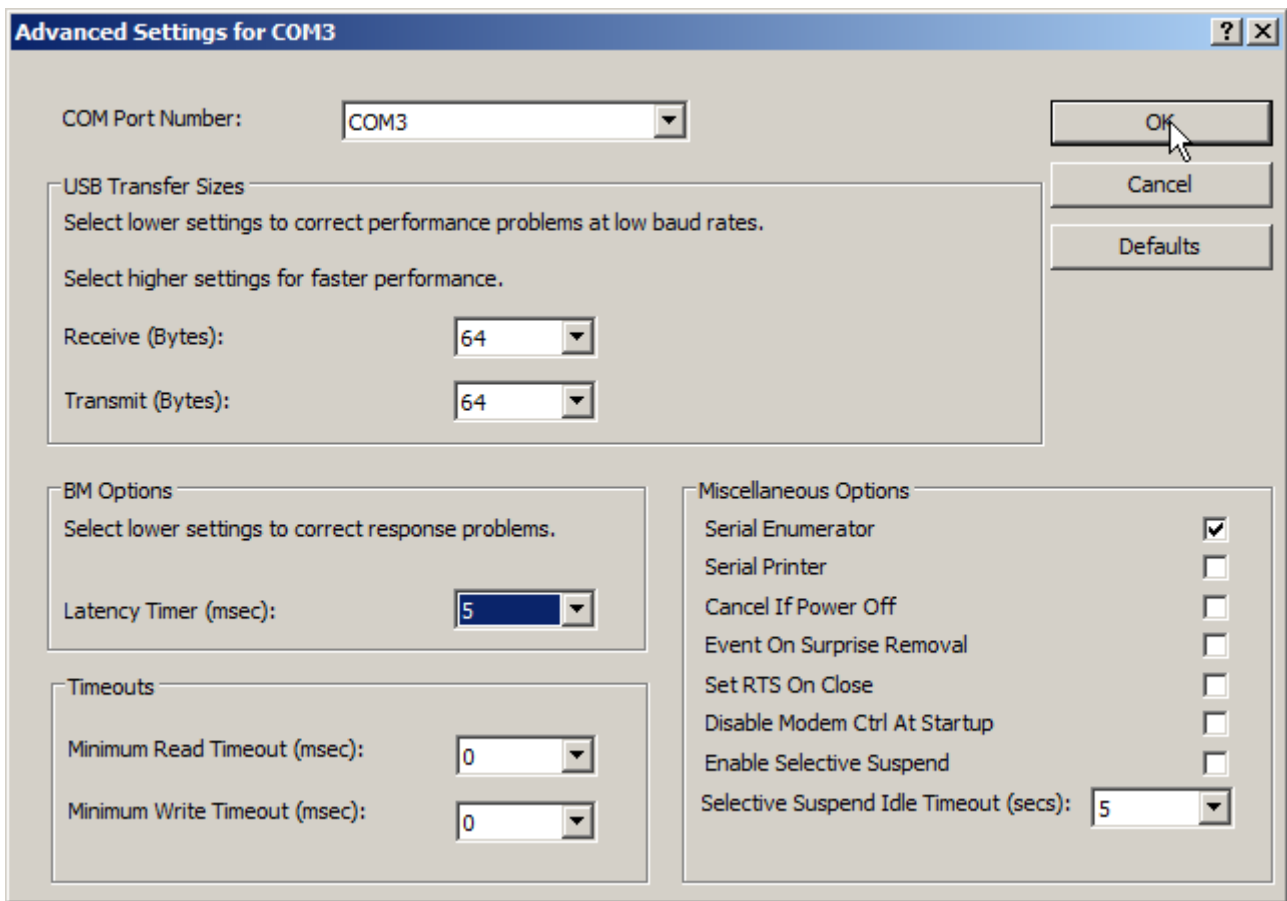
Open Device Manager



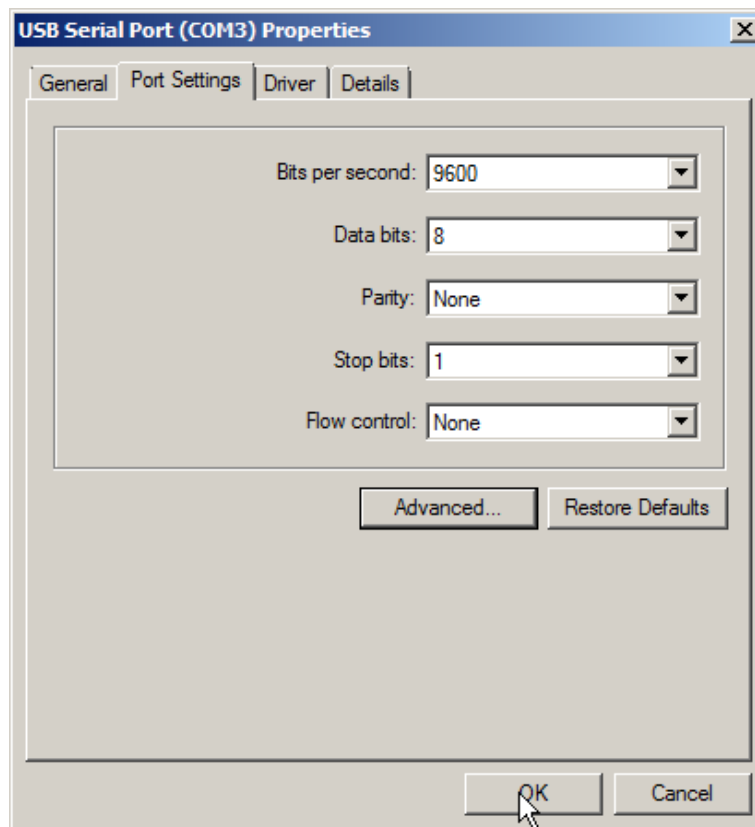
Right click USB Serial Port (COMx) then left click Properties



Select the Port Setting tab and click on Advanced



Change the settings for Receive (Bytes), Transmit (Bytes) and Latency Timer (msec) to the values shown in the screenshot above. Then OK to exit all boxes and close the Device Manager.

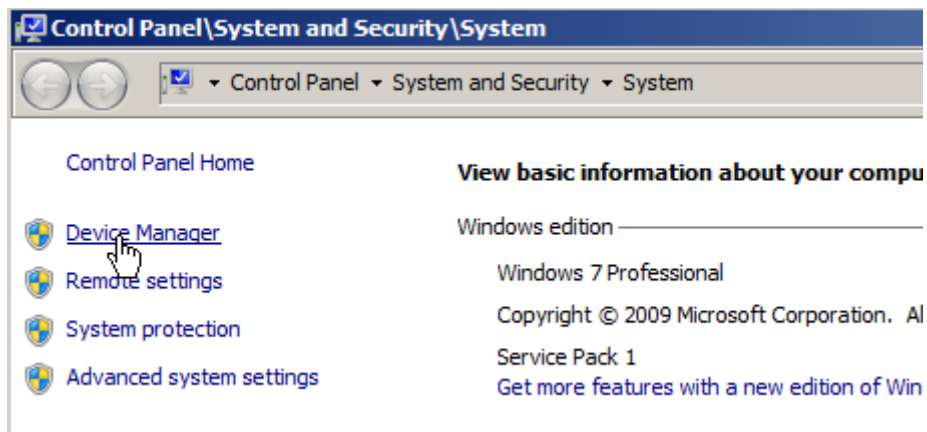


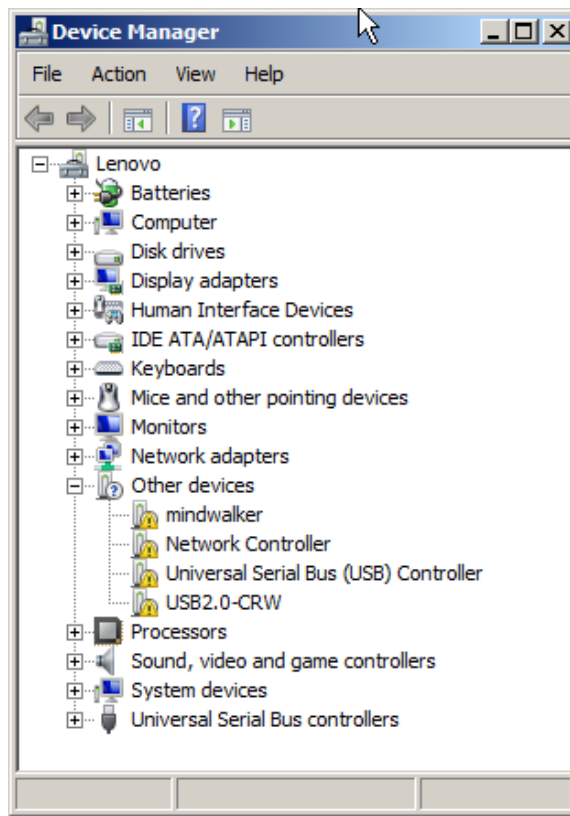
Manual USB Driver Install

Click button below and run the program to extract files to a known folder location on your computer. Remember this location for later and use it for the Browse location in the dialog box on page 8.

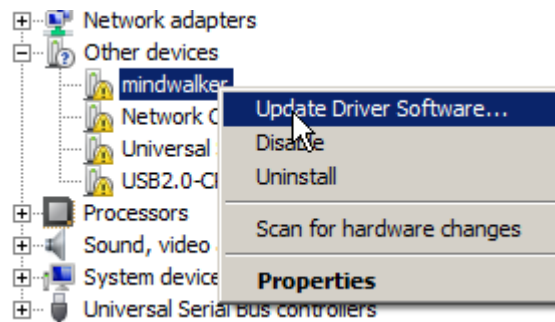
USB Driver Download

Open the Device Manager and follow the procedure shown in the screenshots. Note that there are two drivers to install so the procedure repeats, and that the COM port assigned here is number 3 (COM3). It may be a different number on your system.

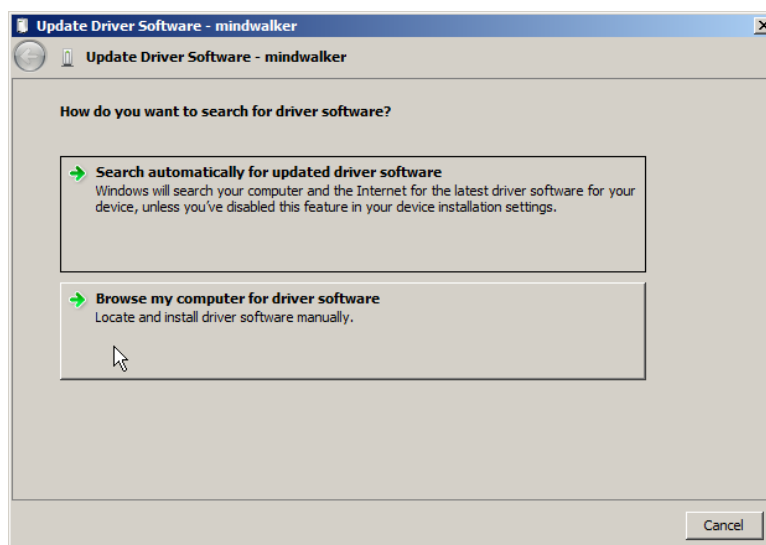




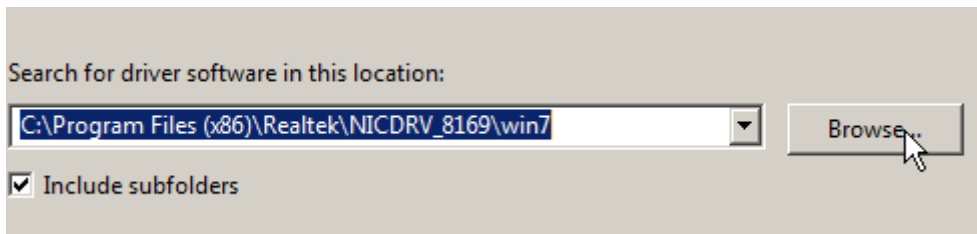
Note the mindwalker entry with exclamation warning symbol.



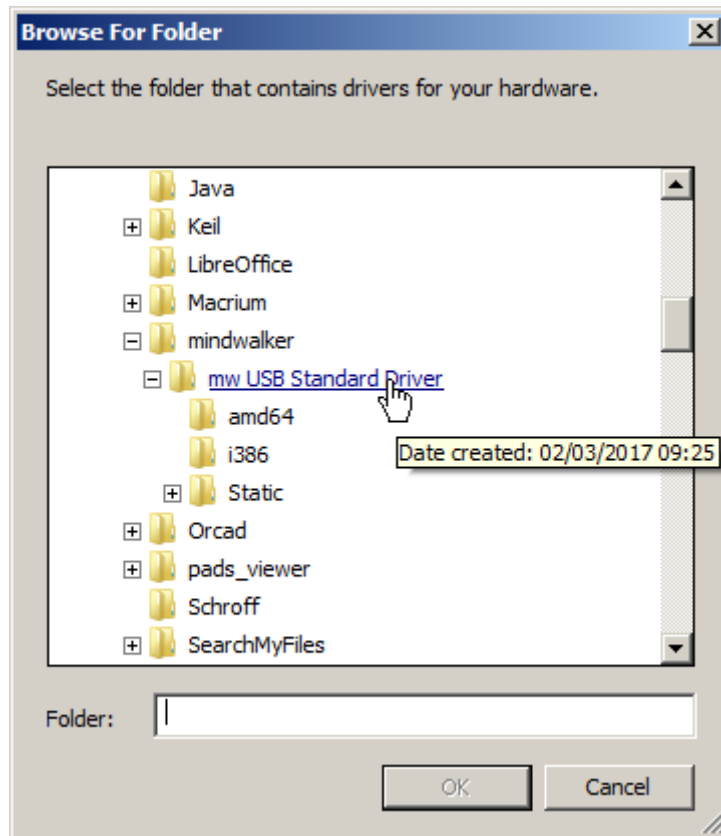
Right click on mindwalker and left click Update Driver Software



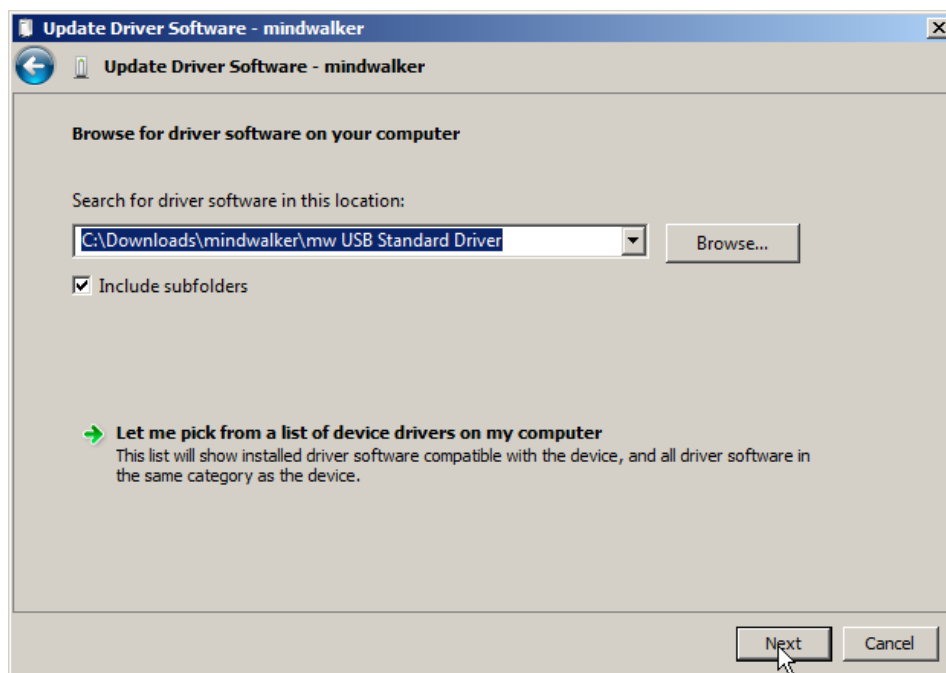
Select Browse my computer.....



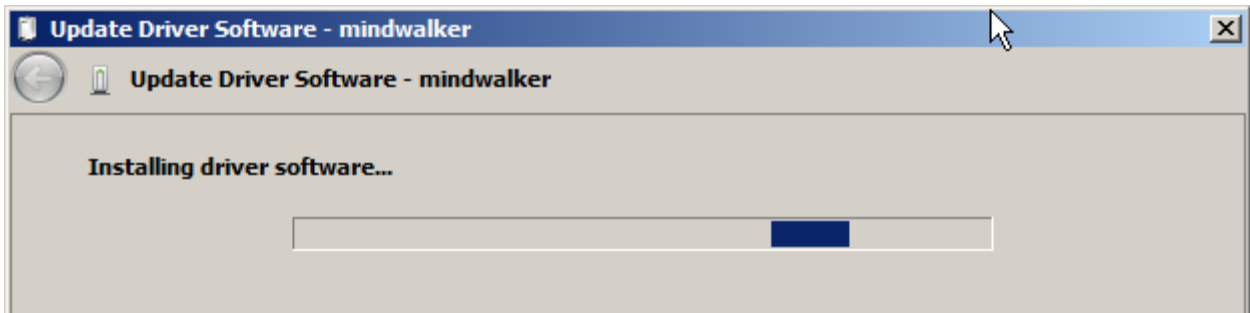
Select Browse..(ignore highlighted text shown, yours will be different)



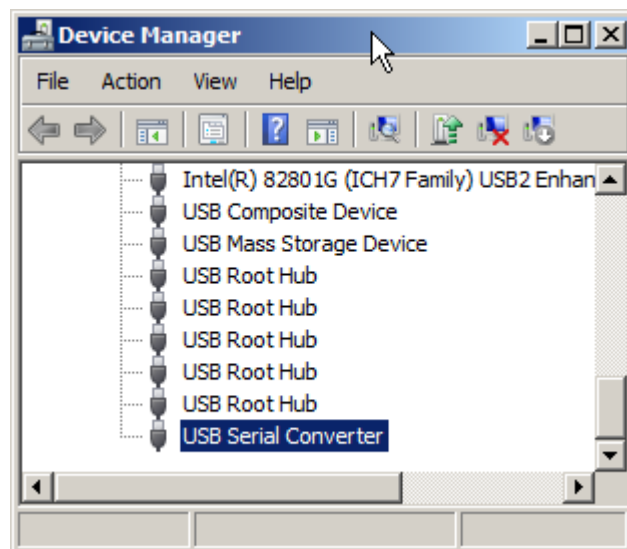
Navigate to the USB driver folder you downloaded and left click



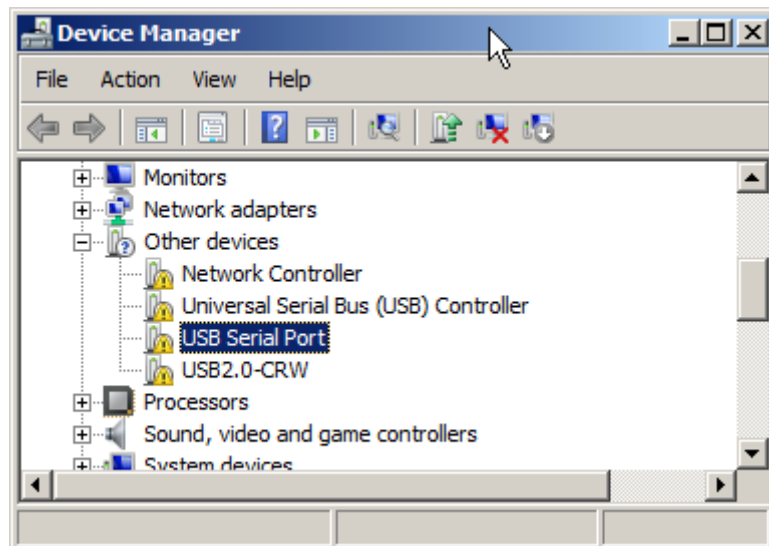
Click Next



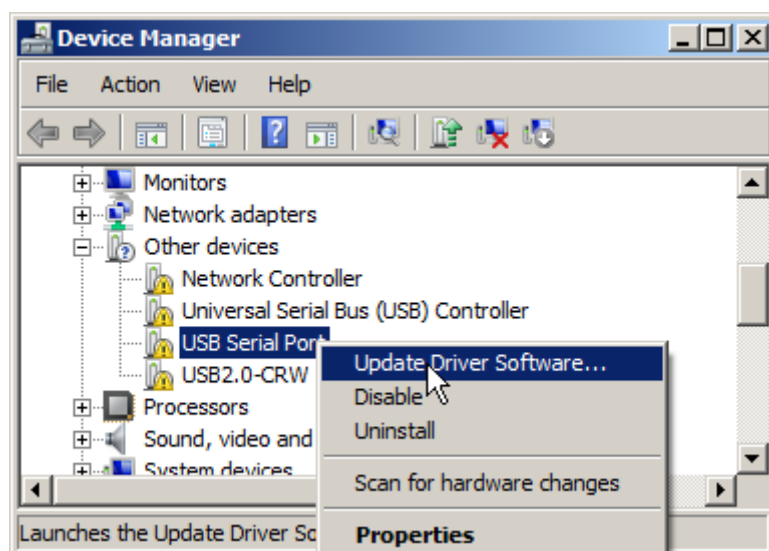
Click Close



USB Serial Converter entry will now appear in the Device Manager



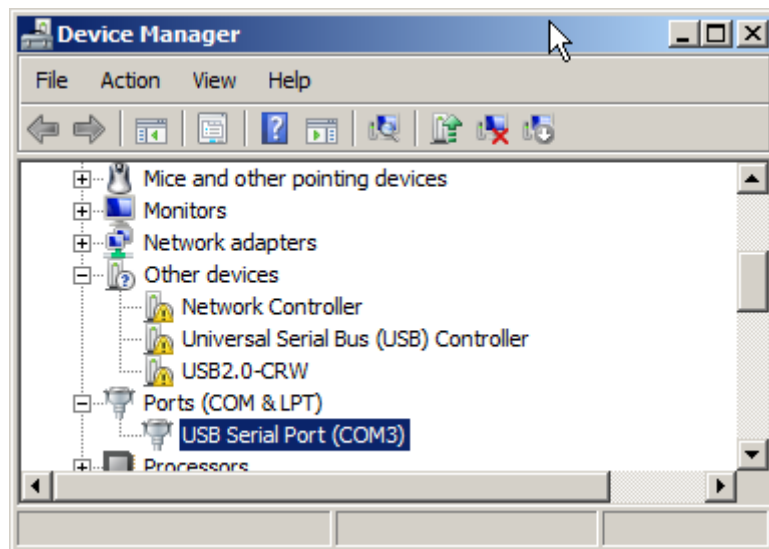
Also USB Serial Port entry will be shown with exclamation warning sign



Repeat the same procedure as before to install the second required driver



Upon completion click Close



USB Serial Port (COMx) entry should now appear in the Device Manger

Now proceed to **Settings Modifications** section on page 4.